



Kingsway, Hove, BN3 2PU

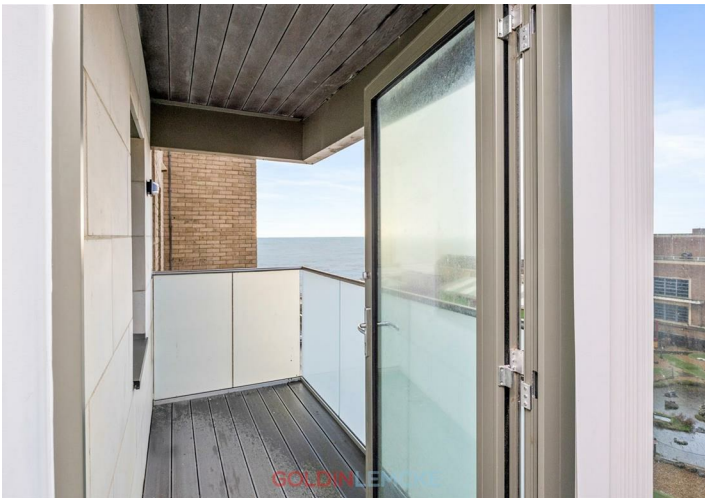
30% Shared ownership £171,000



**GOLDIN
LEMCKE**

01273 777123
GOLDINLEMCKE.COM

SELLING HOMES
IN BRIGHTON
& HOVE
SINCE 2002



Kingsway, Hove, BN3 2PU

30% Shared ownership £171,000

A stunning three-bedroom apartment set on the third floor of this prestigious modern development, positioned in a highly sought-after spot just off Hove seafront. Presented in excellent decorative order, the property enjoys large windows throughout and a south-west facing balcony with impressive sea views.

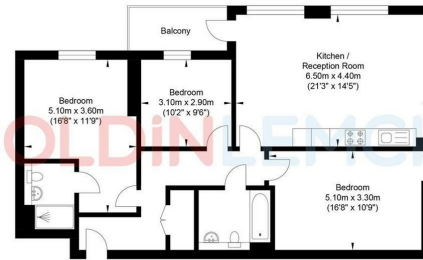
SHARED OWNERSHIP
 Percentage share- 30% with opportunity to staircase to 100%
 Full Market Value- £570,000
 *Monthly Rent- £1163.14
 *Monthly Service Charge- £361 per month

A stunning three-bedroom apartment set on the third floor of this prestigious modern development, positioned in a highly sought-after spot just off Hove seafront. Presented in excellent decorative order, the property enjoys large windows throughout and a south-west facing balcony with impressive sea views.

The flat forms part of a well-maintained development with a secure entry system, smart communal areas, and a lift. Inside, the accommodation includes a wide entrance hall with generous storage, a triple-aspect kitchen/living/dining room with a modern fitted kitchen and direct access to the balcony, capturing fantastic sea and city views. There are three double bedrooms—one with its own en suite shower room—along with a stylish family bathroom. The property is beautifully presented, and internal viewing is strongly recommended to appreciate this superb and rarely found home.

133 Kingsway is extremely well located, sitting just off Hove seafront with the beach and promenade moments away. Church Road and George Street are close by for cafés, restaurants, and everyday essentials, while regular bus routes provide quick links into Brighton. Hove Station is also within easy reach, making travel further afield straightforward. It's a fantastic spot that puts everything you need within a short walk.

Kingsway



Third Floor
 Approximate Floor Area
 1019.23 sq ft
 (94.69 sq m)



Approximate Gross Internal Area = 94.69 sq m / 1019.23 sq ft
 Illustration for identification purposes only, measurements are approximate, not to scale.

Energy Efficiency Rating		Current	Potential
Very energy efficient - lower running costs			
(92 plus) A		85	85
(81-91) B			
(69-80) C			
(55-68) D			
(39-54) E			
(21-38) F			
(1-20) G			
Not energy efficient - higher running costs			
England & Wales		EU Directive 2002/91/EC	

SELLING SOMETHING SIMILAR?

Get in touch for a free, no obligation valuation.
 Call 01273 777123 or email property@goldinlemcke.com

The above information has been provided by the vendor in good faith, but will need verification by the purchaser's solicitor. Any areas, measurements or distances referred to are given as a guide only and are not precise. Floor plans are not drawn to scale and are provided only to help illustrate the general layout of the property. The mention of any appliances and/or services in this description does not imply that they are in full and efficient working order and prospective purchasers should make their own investigations before finalising any agreement to purchase. It should not be assumed that any contents, furnishings or other items shown in photographs (which may have been taken with a wide angle lens) are included in the sale. Any reference to alterations to, or use of, any part of the property is not a statement that the necessary planning, building regulations, listed buildings or other consents have been obtained. We endeavour to make our details accurate and reliable, but they should not be relied on as statements or representations of fact and they do not constitute any part of an offer or contract. The seller does not give any warranty in relation to the property and we have no authority to do so on their behalf.